



Live the life you so
richly deserve.



A new way to feel more at home.

In many ways, life at The Bridges at Bent Creek is just what you would imagine. Spacious apartments. A caring staff. The beautiful Pennsylvania surroundings. But it only takes a slightly deeper look to discover that it offers all those things and so much more.

The Bridges at Bent Creek is operated by Bridge Senior Living. Which means we go beyond the expected. We strive to care more. To innovate more. To inspire more. All to help you create a lifestyle that is as abundant and fulfilling as you dare to dream.





The beauty of Pennsylvania inside and out.



The Bridges at Bent Creek is tucked away in the idyllic town of Mechanicsburg. But its location is just as convenient as it is peaceful, so you're never far from whatever you want – be that a relaxing night at home or an evening out on the town.



Where are we?

2100 Bent Creek Blvd
Mechanicsburg, PA 17050
866-274-4423





IMAGE OF THE MECHANICSBURG, PA SURROUNDING AREA



A sanctuary for every season.

On the journey of life, we sometimes get to choose our paths, and sometimes we encounter unexpected detours that lead to new adventures.

As a Bridge Senior Living community, The Bridges at Bent Creek helps create rewarding lifestyles for all our residents. With Personal Care, Memory Care, therapy care and Respite Care options, along with round-the-clock expert health services and support, life here always fosters a sense of serenity, safety, and satisfaction.



Your desire to stay active can still be fulfilled, thanks to the expert care of The Bridges at Bent Creek's friendly professionals.

Personal Care

A helping hand toward a happier life.

With the support of friends and family, aging successfully is rarely a solitary achievement. But sometimes, the need for more consistent help arises. Fortunately, your desire to stay active can still be fulfilled, thanks to the expert care of The Bridges at Bent Creek's friendly professionals.

Naturally, help is available daily, so your security is ensured. We also feature an emergency response system, daily check-ins, and a medication management service so you never have to worry about what to take or when.

A few common ways our associates assist with daily activities include:

- ***Assistance with bathing and dressing as needed***
- ***Assistance getting in and out of bed***
- ***Assistance getting to meals and other activities***
- ***Additional assistance at mealtime if needed***
- ***Discreet Personal Care whenever needed***
- ***Medication Management***

For Personal Care residents, we offer eight floor plans in a variety of studio/1-bath and 1-bed/1-bath layouts.

Like all of our apartments, they feature an open, contemporary design along with modern appliances.

All apartments include

- Individual thermostat controls
- Modern kitchenettes
- Utilities (electricity and water)
- Housekeeping
- Trash service
- Pest control
- No property taxes
- Internet
- Cable
- Linen services
- Three meals a day

Of course, they're pet-friendly too.

*Additional costs may apply.



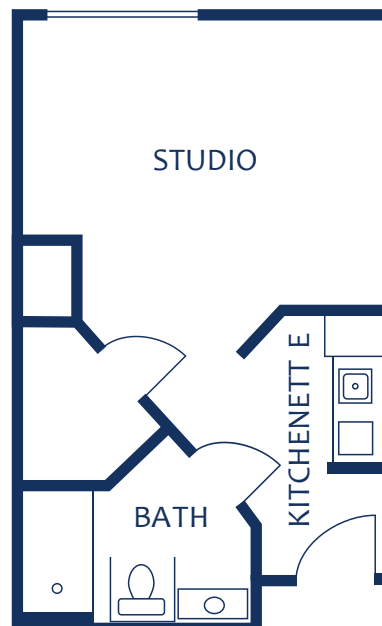
Dauphin 1 (ADA)

372 sq. ft. — 0 Bedroom/1 Bath



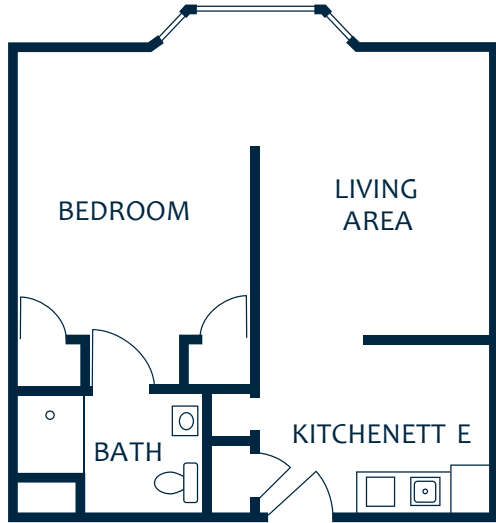
Dauphin 2

372 sq. ft. — 0 Bedroom/1 Bath



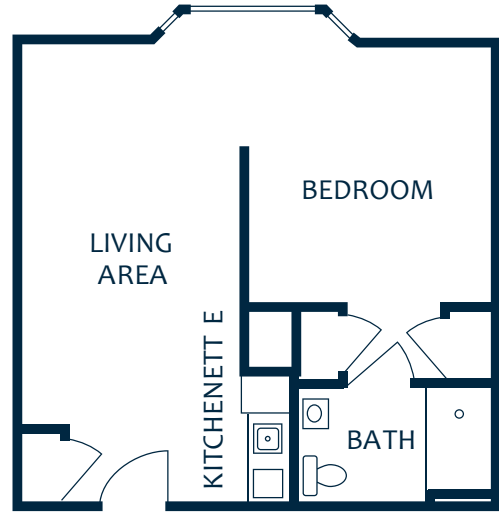
Cumberland 1

542 sq. ft. — 1 Bedroom/1 Bath



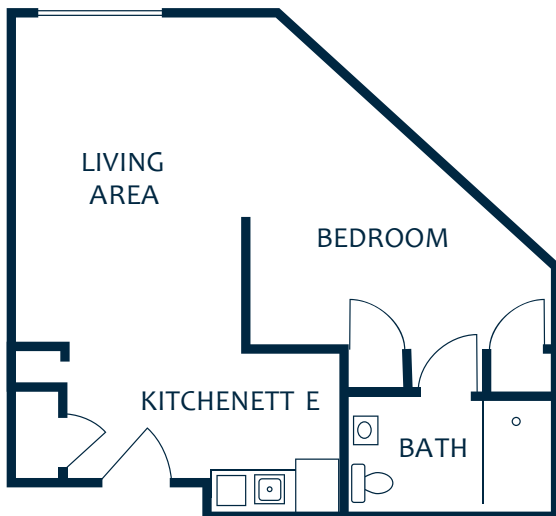
Cumberland 2 (ADA)

555 sq. ft — 1 Bedroom/1 Bath



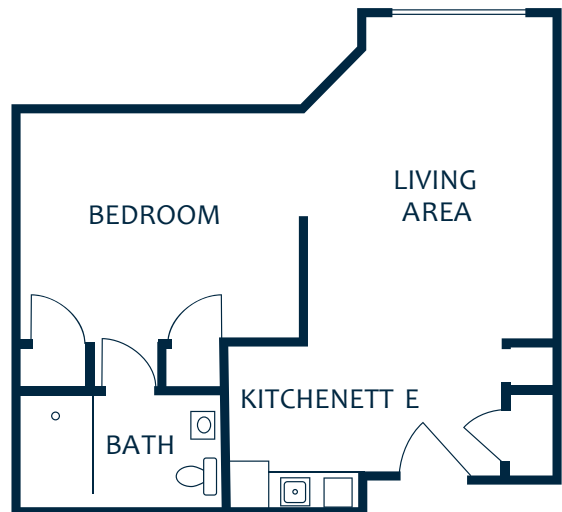
Franklin 1

580 sq. ft. — 1 Bedroom/1 Bath



Franklin 2 (ADA)

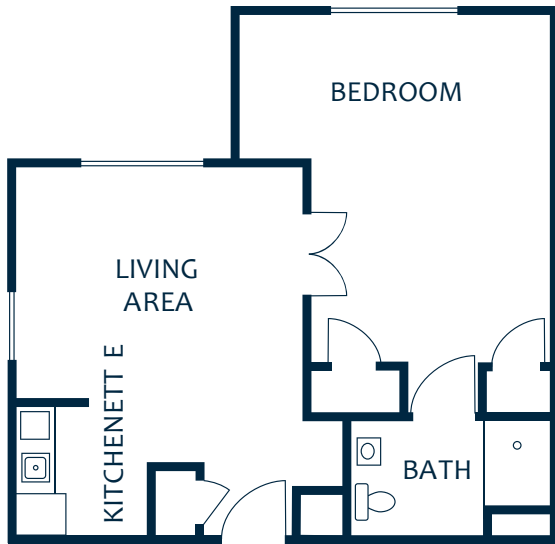
563 sq. ft. — 1 Bedroom/1 Bath



Personal Care

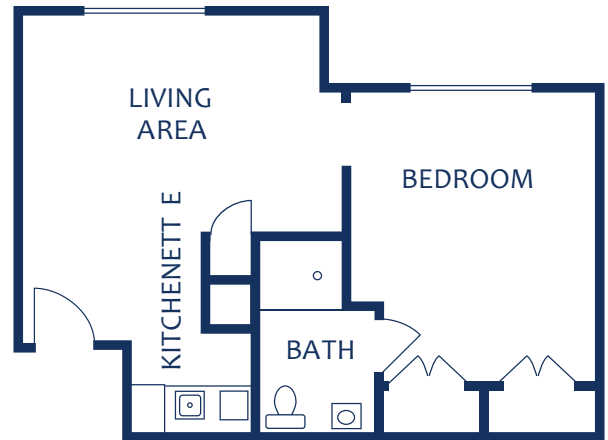
Adams

587 sq. ft. — 1 Bedroom/1 Bath



Berks

587 sq. ft. — 1 Bedroom/1 Bath



Memory Care

Making the most of every day.

If you have a loved one experiencing cognitive issues, it's encouraging to know there's a place like The Bridges at Bent Creek. A place where every day is designed to be as positive and productive as possible. To help ensure that happens, every staff member on our Memory Care team undergoes specialized training, resulting in a combination of expert care and extraordinary empathy that both your loved one – and your entire family – will appreciate.

Some features of our Memory Care living include:

- ***Daily on-site support of trained staff***
- ***Nutrition management***
- ***Assistance, including extra social and one-and-one time, to help each resident experience as much joy as possible every single day***
- ***Emotional support using proven techniques individualized for each resident***
- ***Family-centered consultation and involvement to help achieve consistently better outcomes***



Memory Care apartments are available in semi-private and private studios.

They are designed to facilitate the highest levels of safety and care.

All apartments include

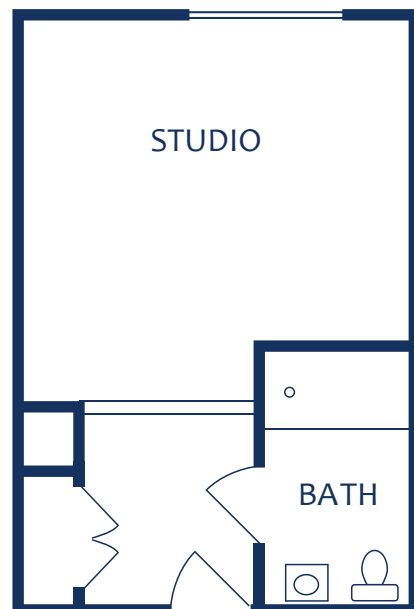
- *Individual thermostat controls*
- *Utilities (electricity and water)*
- *Housekeeping*
- *Trash service*
- *Pest control*
- *No property taxes*
- *Internet*
- *Cable*
- *Linen/laundry services*
- *Emergency pull-chord*
- *Handicap accessible bathroom (Private/semi-private)*

**Additional costs may apply*



Dogwood (ADA)

311 sq. ft. — 0 Bedroom/1 Bath



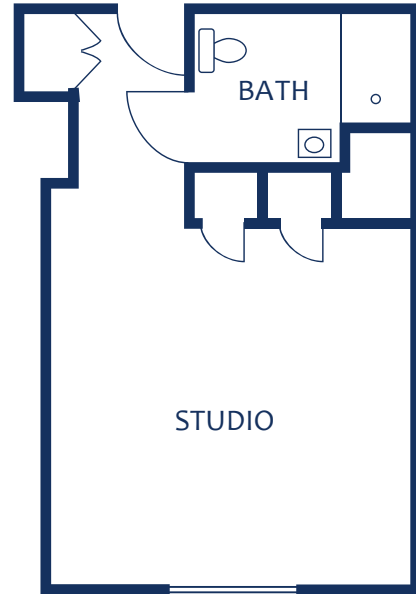
Elm

311 sq. ft. — 0 Bedroom/1 Bath



Magnolia

405 sq. ft. — 0 Bedroom/1 Bath





It's what's on the inside that counts.

When you're considering a senior living community, there are certain "must-haves." A choice of spacious apartments. A compassionate staff. Inviting meals you can look forward to. Outstanding care whenever care is needed.

At The Bridges at Bent Creek, we agree that these are, indeed, "must-haves." But as a Bridge Senior Living community, being great at those things is just the starting point, not the finish line. Because a great life demands more – much more – than simply being "good enough."

A feast for the body and the soul.



If food is the foundation of healthy living, mealtime may just be the foundation of a healthy community. After all, breaking bread with friends and family has been a principal way of building relationships, stirring the heart, and sharpening the mind throughout history.

At The Bridges at Bent Creek, we take the joy of mealtime seriously. Our dining services feature restaurant-quality, chef-prepared meals.

You'll always find something that reminds you of the best home cooking you've ever had, as well as options that may open new culinary doors. Of course, whatever you prefer, every meal will be delicious, nutritious, and customizable to your dietary needs.



Grow as a person, build stronger relationships, deepen your spirituality, expand your knowledge, and live with purpose.

All it takes is a single Spark.

Will you find outstanding amenities at The Bridges at Bent Creek? Of course. How about activities? More than space here will allow us to describe. But before we talk about those, let's talk about this: Discover Your Spark.

Discover Your Spark was developed by Bridge Senior Living to help our residents rekindle old hobbies and ignite new passions — to understand what styles and types of activities they enjoy the most and then suggest new avenues of exploring those passions from all angles. So you not only stay active, but you also grow as a person, build stronger relationships, deepen your spirituality, expand your knowledge, and live with purpose.

Our residents truly love Discover Your Spark and we believe you will, too. We also think you'll love all the wonderful amenities and activities you'll find at The Bridges at Bent Creek, including:



- ***Spacious, bright layouts***
- ***Kitchenettes***
- ***Housekeeping and linen services***
- ***Barbershop and salon with hair styling and manicures (additional charges apply)***
- ***On-site fitness center with physical, speech, and occupational therapy services available***
- ***Scenic walking trails***
- ***Relaxing courtyards***
- ***Scheduled transportation to off-site appointments and events***
- ***Daily safety checks for all residents***
- ***Medication management program***
- ***Convenient in-house pharmacy***

More than a touch of useful technology.

While it may be great fun to reminisce about days gone by, few of us would care to return to using party-line telephones or adjusting rabbit ears on the ole television.

At The Bridges at Bent Creek, we don't just welcome the march of technological progress – we join in the innovation parade.



Here are a few of the ways we're making our residents' lives better via high-touch, high-tech solutions:

Bridge Senior Living App

The Bridges at Bent Creek is operated by Bridge Senior Living. So, naturally, we use the Bridge Senior Living App. Powered by LifeLoop, this app offers a central hub for residents, their families, friends, and staff to stay connected by sharing personalized activity schedules, photos, messages, and more.

Telehealth

The era of doctors making house calls is back – at least virtually. Not only do we offer technical support for your telehealth appointments, we even conduct appointments in the privacy of your room or apartment. It's convenient, safe, and thorough. Just what the doctor ordered.

Bridge Senior Living makes all the difference.

BRIDGE SENIOR LIVING

The Bridges at Bent Creek is operated by Bridge Senior Living, recognized as one of the most innovative, senior living community management companies in the United States.

Beyond developing forward-thinking initiatives, such as the Bridge Senior Living App and Discover Your Spark, Bridge Senior Living stands apart for its commitment to resident safety with the Bridge Safe program. Bridge Safe ensures that we have enhanced safety protocols in place to protect our residents and the resources to put those protocols into practice. From enhanced cleaning and guest screenings to daily check-ins to enhanced air filtration, Bridge Safe helps keep The Bridges at Bent Creek as happy a community as possible.



Bridge Senior Living continues to pursue improvements and innovations across all aspects of community life. We're proud to be part of their family and welcome the opportunity to tell you more about how Bridge makes life at The Bridges at Bent Creek better every day.



An honest discussion about financial matters.

At The Bridges at Bent Creek, we understand that the costs associated with moving into a senior living community are one of the main concerns for potential residents and their families.

So we're very upfront with our prices and invite you to contact one of our expert associates with any questions you may have.

All rent, care fees and other fees are disclosed within the insert provided. These prices include rent, meals, utilities, maintenance, and

housekeeping. Plus, you don't have to pay any property or real estate taxes.

There are many options when it comes to financing a life at The Bridges at Bent Creek, including retirement savings, proceeds from selling your existing house, selling stocks and securities, etc. The options aren't quite limitless, but they are numerous. So again, we invite you to contact one of our experts to discuss matters further. And it truly will be a discussion and not a sales call. We promise.





What else would you like to know?

Seriously, we'd really love to hear from you and help you learn even more about what makes The Bridges at Bent Creek such a wonderful place. Yes, everyone here may be a bit biased, but we believe residents and staff alike would tell you that being a part of this community was the right decision for them.

Is it the right decision for you? That's not for us to say. After all, everyone's needs and situations are different. But you'll never know for sure unless you stop by and take a look around for yourself, which you are cordially invited to do.

To schedule your own visit at The Bridges at Bent Creek, please call 866-274-4423. We promise it will be a zero-pressure experience.

Take a tour, meet some residents, meet the staff, ask all the questions you like – even enjoy lunch if you time it right! Just give us a call and we'll make it happen.

To schedule a visit or for more information about The Bridges at Bent Creek, call 866-274-4423.

**The Bridges at Bent Creek
2100 Bent Creek Blvd
Mechanicsburg, PA 17050**

